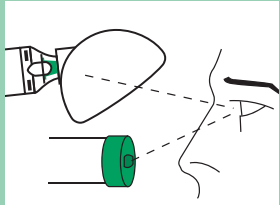
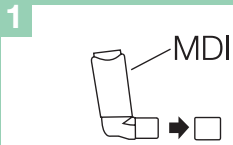


Instructions for Use

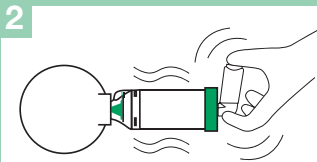


READ INSTRUCTIONS PRIOR TO USE

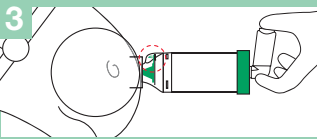
Prior to use, carefully examine the product for proper assembly, foreign objects and damaged or missing parts. Remove any foreign objects prior to use. The product should be replaced IMMEDIATELY if there are any damaged or missing parts.



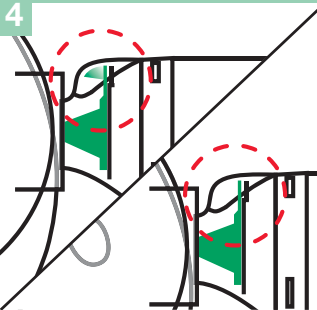
1 Remove cap from Metered Dose Inhaler (MDI).
Before use, ensure the instructions supplied with the MDI have been read.



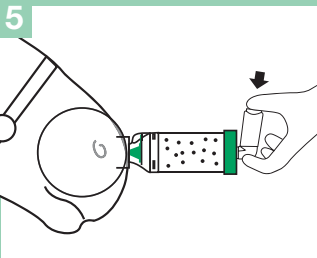
2 Insert the MDI into the **Backpiece** of the chamber. While holding the **AeroHippus*** Equine Aerosol Chamber (EAC) and MDI firmly together, shake the unit briskly 4 to 5 times immediately before each use.



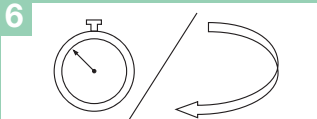
3 Gently apply mask to one nostril and ensure an effective seal.



4 As the horse inhales, the brightly coloured **Flow-Vu*** Inspiratory Flow Indicator (IFI) should flutter or move toward the horse. The **Flow-Vu*** IFI will return to the vertical position when the horse stops inhalation or exhales. If your horse experiences anxiety, speak to your veterinarian for advice.



5 As the horse inhales, depress the MDI and hold the mask in place for 3 – 5 breaths. Maintain an effective seal and use the **Flow-Vu*** IFI to assist in breath counting. Ensure the veterinarian's dosage instructions are followed and that only one puff of medication is delivered at a time.



6 Follow instructions supplied with the MDI regarding the amount of time to wait before repeating instructions 2 – 5 as prescribed.

Manufactured by:



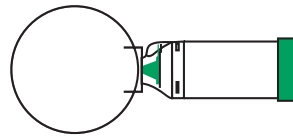
Trudell Medical International*

725 Third Street,
London, Ontario, Canada N5V 5G4
Fax: +1(519) 455-7858 Email: aerohippus@trudellmed.com
www.aerohippus.com

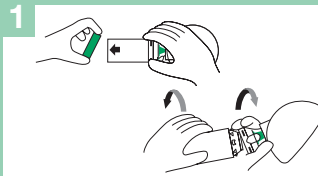
AeroHippus*

Equine Aerosol Chamber

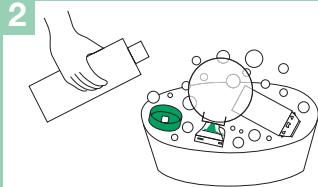
Cleaning Instructions



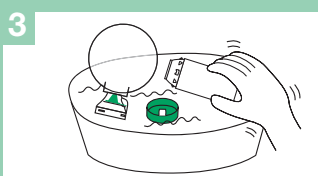
The **AeroHippus*** EAC with **Flow-Vu*** IFI should be cleaned before first use and then weekly.



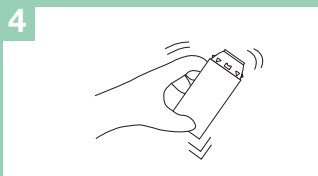
1 Remove the **Backpiece** and mask adapter only. DO NOT attempt to remove any other parts.



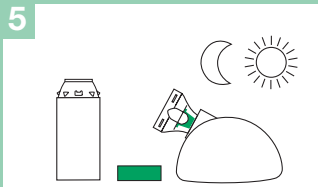
2 Soak all parts for 15 minutes in a mild solution of liquid dish detergent and lukewarm clean water. Agitate gently.



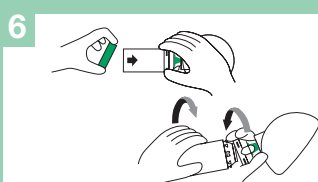
3 Rinse parts in clean lukewarm water.



4 Shake out excess water from the parts and allow to air dry in a vertical position, or dry with a soft cloth.



5 Ensure parts are dry before reassembly.



6 Replace **Backpiece** and mask adapter when unit is completely dry and ready for use.

Intended Use

For use with a Metered Dose Inhaler as prescribed by your veterinarian.

Cautions

- Use only under the direction of a veterinarian and read all instructions before use.
- Do not leave **AeroHippus*** EAC unattended with children.
- Do not disassemble the product beyond what is recommended in the Cleaning Instructions or damage may result.
- The **AeroHippus*** EAC is a medical device. To ensure proper performance it should be cleaned according to these instructions. It should NOT be cleaned in a dishwasher.
- If unsure how to use this product, talk to your veterinarian.

Notes

- Read and follow the instructions provided with your inhaler.
- This product contains no latex.
- If you have questions about the performance or usability of this product, please contact your veterinarian.
- For instructions in alternate languages, visit our website (www.aerohippus.com).