

**AeroEclipse<sup>®</sup> XL**

BAN<sup>®</sup> Nebuliser

**OMBRA<sup>®</sup>**

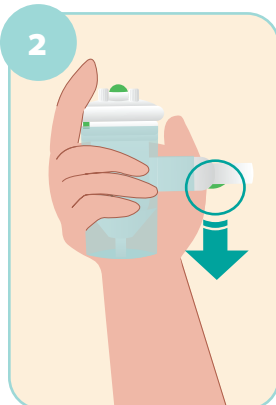
Table Top Compressor



# Quick Start Guide



Place compressor on flat surface



Ensure valve on mouthpiece faces down



Unscrew top



Remove top



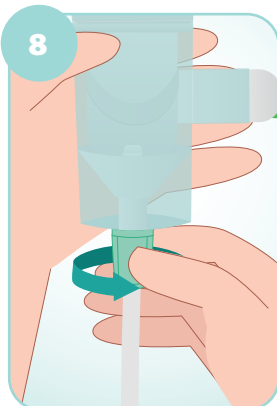
Place medication in cup



Reattach top



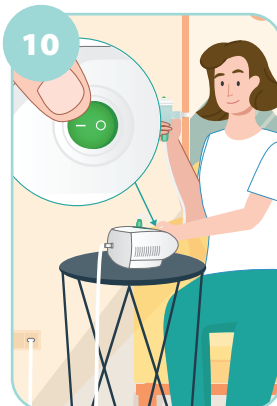
Gently hand tighten



Attach tubing to bottom of nebuliser



Place nebuliser in cup holder and attach tubing to air inlet on compressor



Plug in compressor and switch on



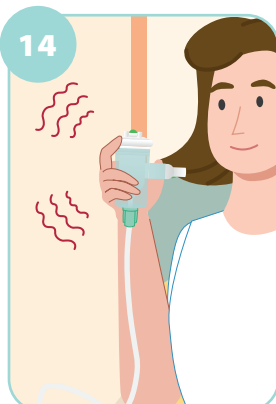
Place mouthpiece in mouth



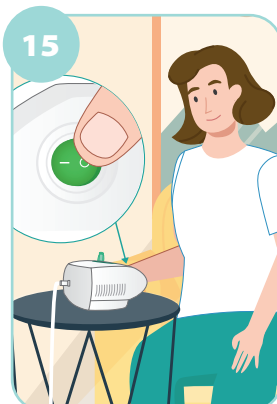
Inhale slowly and deeply



Exhale normally



Continue until you hear a sputter sound



Switch off compressor and unplug. Disconnect nebuliser from compressor

For Indications for Use and more detailed use instructions please refer to the Instructions for Use that accompanied your **AeroEclipse<sup>®</sup> XL BAN<sup>®</sup>** Nebuliser and your **Ombra<sup>®</sup>** Table Top Compressor (accessible at [www.trudellmed.com](http://www.trudellmed.com))

# AeroEclipse<sup>®</sup> XL

BAN<sup>®</sup> Nebuliser



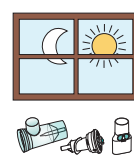
## Cleaning Methods



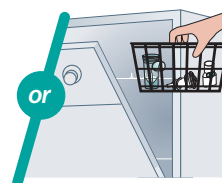
**Soak** in warm soapy water.



**Rinse** in clean water.



**Air Dry** thoroughly.



**Dishwasher Safe** top rack in basket.

Excluding tubing

## Disinfection Methods



**Boil** for 5 to 15 minutes.



**Electronic Steam Disinfector**

See instructions for use.

Excluding tubing



**Microwave Steam Bag**

See instructions for use.

**4 70% Isopropyl Alcohol**

Soak for 5 minutes. Rinse thoroughly with sterile water.

**5 1:50 Bleach Solution**

Soak for 3 minutes. Rinse thoroughly with sterile water.

**6 Milton, Dodie, Control III, Cidex**

See instructions for use.

**7 1:3 Vinegar Solution**

Soak for 1 hour. Rinse thoroughly with sterile water.

# OMBRA<sup>®</sup>

Table Top Compressor



## Cleaning Method

Unplug compressor from the electrical outlet.

**Wipe** case, switch, and handle with a damp cloth.



## Disinfection Methods

Unplug compressor from the electrical outlet.



**1 Wipe** case, switch and handle with a tissue dipped in:

- 70% Isopropyl Alcohol
- 1:50 Bleach Solution
- 3M<sup>†</sup> SoluPrep<sup>†</sup> Solution

**2 Wipe** case, switch and handle with:

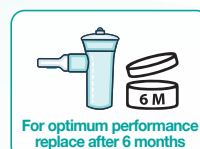
- PDI<sup>†</sup> Super Sani-Cloth<sup>†</sup> Germicidal Disposable Wipe

See instructions for use.

For Indications for Use and more detailed use instructions please refer to the Instructions for Use that accompanied your **AeroEclipse<sup>®</sup> XL BAN<sup>®</sup> Nebuliser** and your **Ombra<sup>®</sup> Table Top Compressor** (accessible at [www.trudellmed.com](http://www.trudellmed.com))



**TRUDELL MEDICAL**  
UK LIMITED



**LEARN MORE**



453-UK-EN