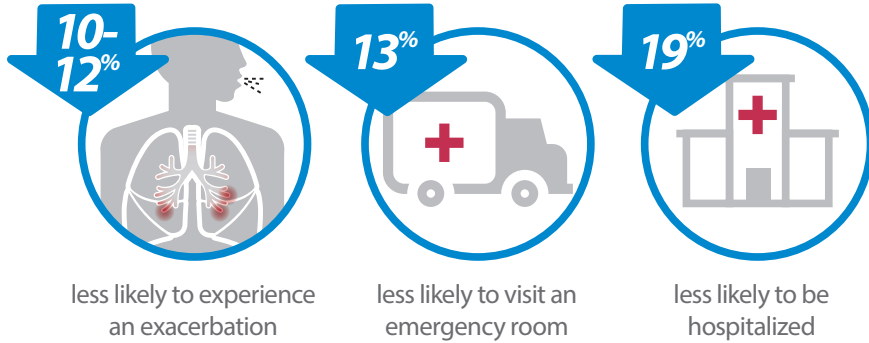


Real-world evidence shows improved asthma outcomes with **AeroChamber Plus® Flow-Vu®** Chamber.

Landmark asthma study demonstrates device choice determines asthma control¹



less likely to experience an exacerbation

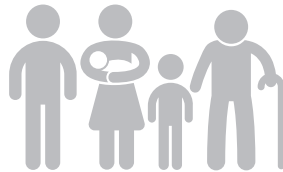
less likely to visit an emergency room

less likely to be hospitalized



Other Chambers vs. **AeroChamber Plus® Flow-Vu® Chamber**

lower exacerbation-related costs at 12 months



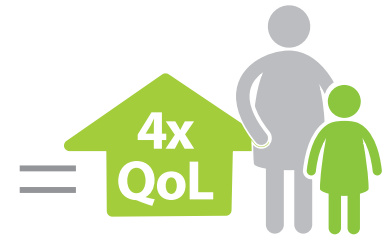
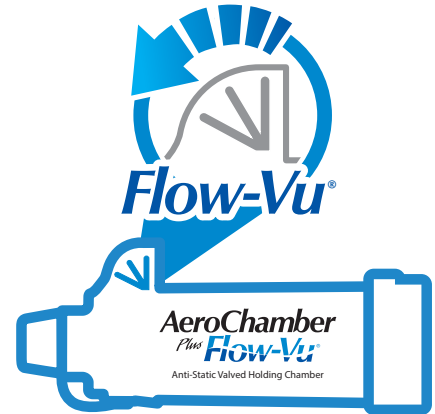
18,650 patients. All ages (0 to over 75)

44% female **56%** male

4.5% history of severe exacerbation

45.3% history of moderate exacerbation

Evaluation of **Flow-Vu®** Inhalation Indicator



Approximately 4x increase in caregiver Quality of Life²

Did You Know?

9 out of **10** Canadians with asthma don't have their symptoms under control³.

250 Canadians die each year from asthma and almost all of these deaths are preventable⁴

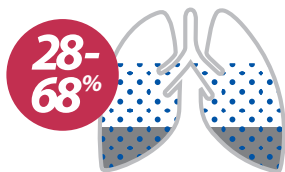
Asthma is the **most common chronic disease among children** and a leading cause of hospitalization⁴



Last year there were more than **70,000 emergency room visits** due to asthma attacks in Canada⁵

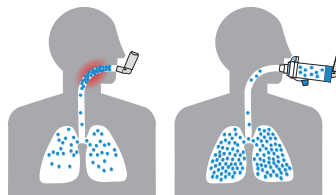


Expenditure on inhalers is wasted due to **poor inhaler technique**⁶



Patients do not use their inhalers well enough to benefit from the prescribed medication⁶

People who use a valved holding chamber with their metered dose inhaler versus metered dose inhaler alone **have better control**⁸



Guidelines recommend chambers for **both children and adults**⁷

1. Buncipakdee C et al. A retrospective study of the effectiveness of AeroChamber Plus® Flow-Vu® Antistatic valved holding chamber for asthma control. Pulmonary Therapy. 2017; 2. Amman W et al. Evaluation of asthma control, parent's quality of life and preference between AeroChamber Plus® and AeroChamber Plus® Flow-Vu® spacers in young children with asthma. Journal of Asthma. Vol 52:3;2015. 3. The Lung Association. Asthma Control in Canada Survey 2016. http://www.asthma.ca/adults/about/asthma_facts_and_statistics.pdf 4. Asthma Society of Canada. Facts and statistics pdf. 5. Canadian Institute for Health Information. Asthma Emergency Department Visits: Volume and Median Length of Stay, 2014-2015. 6. Fink JB, Rubin BK. Problems With Inhaler Use: A Call for Improved Clinician and Patient Education. Respir Care 2005;50(10):1360-74. 7. Global initiative for asthma (GINA) guidelines, 2017: Global strategy for asthma management and prevention. 8. Levy M, et al. Asthma patient's inability to use a pressurized metered-dose inhaler (pMDI) correctly correlates with poor asthma control as defined by the Global Initiative for Asthma (GINA) strategy: a retrospective analysis. Prim Care Respir J. 2013; Dec;22(4):406-11. © TMI 2017. All rights reserved.